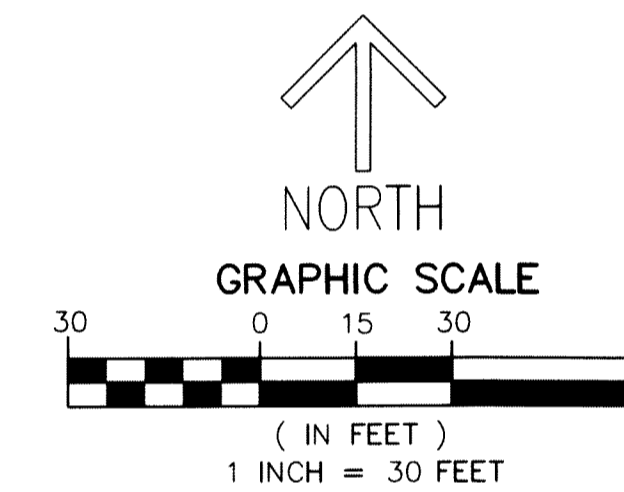


THIS INSTRUMENT PREPARED BY  
DAVID P. LINDLEY  
OF  
**CAULFIELD and WHEELER, INC.**  
SURVEYORS - ENGINEERS - PLANNERS  
7900 GLADES ROAD, SUITE 100  
BOCA RATON, FLORIDA 33434 - (561)392-1991  
CERTIFICATE OF AUTHORIZATION NO. LB3591

78

# AVALON TRAILS AT VILLAGES OF ORIOLE PUD

A PLANNED UNIT DEVELOPMENT  
BEING A REPLAT OF ALL OF PARCELS G-1, G-3, G-4, G-5 AND L.W.D.D. CANAL L-33,  
RECREATION PLAT OF VILLAGE OF ORIOLE, AS RECORDED IN PLAT BOOK 31, PAGE 168,  
TOGETHER WITH  
ALL OF THE PLAT OF GOLF AND TENNIS CLUB OF VILLAGES OF ORIOLE,  
AS RECORDED IN PLAT BOOK 31, PAGE 213,  
ALL OF THE PUBLIC RECORDS OF PALM BEACH COUNTY, FLORIDA  
LYING IN SECTIONS 15 AND 16, TOWNSHIP 46 SOUTH, RANGE 42 EAST,  
PALM BEACH COUNTY, FLORIDA

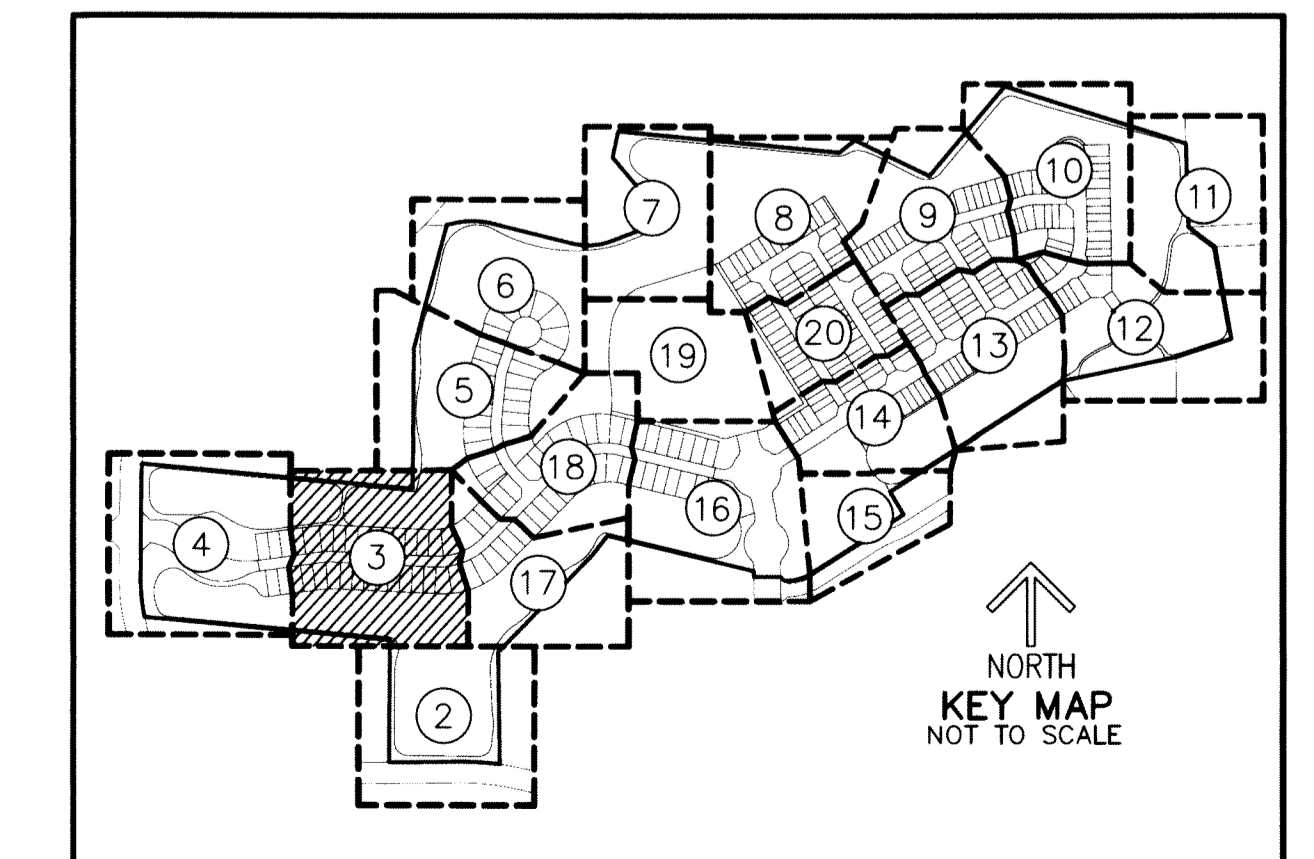


### NOTES COORDINATES, BEARINGS AND DISTANCES

COORDINATES SHOWN ARE GRID  
DATUM = NAD 83 (90/98 ADJUSTMENT)  
ZONE = FLORIDA EAST  
LINEAR UNIT = US SURVEY FEET  
COORDINATE SYSTEM = 1983 STATE PLANE  
TRANSVERSE MERCATOR PROJECTION  
ALL DISTANCES ARE GROUND  
SCALE FACTOR = 1.0000288  
GROUND DISTANCE X SCALE FACTOR = GRID DISTANCE  
BEARINGS AS SHOWN HEREON ARE GRID DATUM,  
NAD 83 (1990 ADJUSTMENT), FLORIDA EAST ZONE.

### LEGEND/ABBREVIATIONS

- CL - CENTERLINE
- Δ - DELTA (CENTRAL ANGLE)
- CB - CHORD BEARING
- CD - CHORD DISTANCE
- DE - DRAINAGE EASEMENT
- E - EASTING (WHEN USED WITH COORDINATES)
- L - ARC LENGTH
- LAE - LIMITED ACCESS EASEMENT
- LB - LICENSED BUSINESS
- LMAE - LAKE MAINTENANCE ACCESS EASEMENT
- LME - LAKE MAINTENANCE EASEMENT
- LSE - LIFT STATION EASEMENT
- L.W.D.D. - LAKE WORTH DRAINAGE DISTRICT
- N - NORTHING (WHEN USED WITH COORDINATES)
- MOHE - MAINTENANCE AND OVERHANG EASEMENT
- O.R.B. - OFFICIAL RECORD BOOK
- PDE - PUBLIC DRAINAGE EASEMENT
- PRAS - PRIVATE RESIDENTIAL ACCESS STREET
- PBCUE - PALM BEACH COUNTY UTILITY EASEMENT
- PC - POINT OF CURVATURE
- PNT - POINT OF NON-TANGENCY
- PRC - POINT OF REVERSE CURVATURE
- PT - POINT OF TANGENCY
- R - RADIUS
- UE - UTILITY EASEMENT
- ◀ - INDICATES "ZERO" SIDE OF LOT LINE
- PRM - DENOTES PERMANENT REFERENCE MONUMENT  
4" x 4" x 24" CONCRETE MONUMENT WITH  
ALUMINUM DISK STAMPED "C&W PRM LB3591"
- PCP - DENOTES PERMANENT CONTROL POINT  
NAIL AND METAL DISK STAMPED "PCP LB3591"
- ▲ - DENOTES PERMANENT REFERENCE MONUMENT  
NAIL AND DISC STAMPED "PRM" LB 3591



MATCH LINE SHEET 4

MATCH LINE SHEET 17

